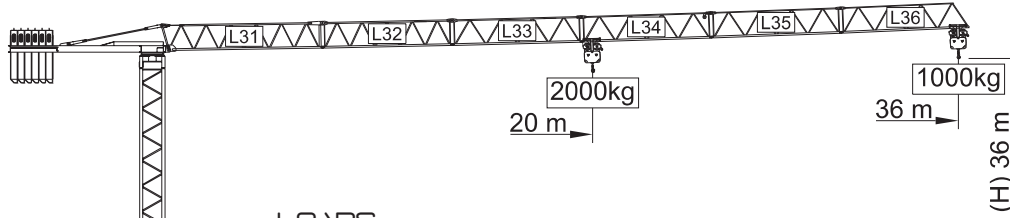


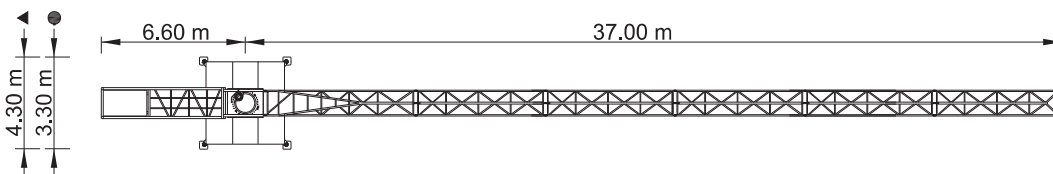
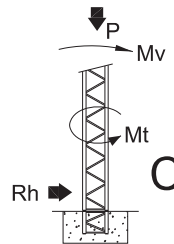
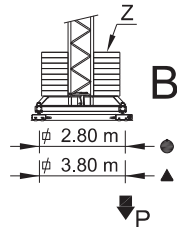
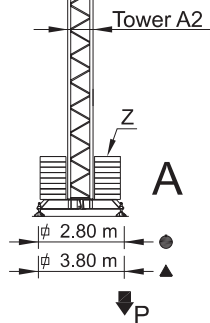
TERRI

TSX 36-1000



LOADS

Counterweight	Jib length	Kg / m		m				
		2000	kg	12	18	24	30	36
9000kg 6x1500kg	36 m L31+L37+L33+L34+L35+L36	20 m	2000	2000	2000	1600	1200	1000
7500kg 5x1500kg	30 m L31+L37+L33+L34+L36	20,6 m	2000	2000	1700	1300		
6000kg 4x1500kg	24 m L31+L37+L33+L36	19,7 m	2000	2000	1600			
4500kg 3x1500kg	18 m L31+L37+L36	18 m	2000	2000				
3000kg 2x1500kg	12 m L31+L36	12 m	2000					



REACTIONS

CHARACTERISTICS

H m	A/B				C			
	Z kN	P kN	Mv kNm	P kN	Rh kN	Mt kNm		
18	400	250	312	219	566	172	17	26
21	400	250	313	221	569	178	20	26
24	400	250	314	222	571	184	23	26
27	400	250	315	224	574	190	25	26
30	400	300	316	238	577	196	28	26
33	480	350	338	264	580	202	31	26
36	600	400	417	286	711	208	34	26

Motions	Speed	Motor's power
↑↓ Hoisting	0 a 58 m/min.	9 kW
○ Slewing	0 a 1 r.p.m.	3 daN.m
↔ Trolleying	0 a 50 m/min.	1,5 kW
→ Travelling*	15 m/min.	2x2 kW
⚡	Electric power	15 KVA
	Tensior	400 v +- 5% (50 Hz)

* Option



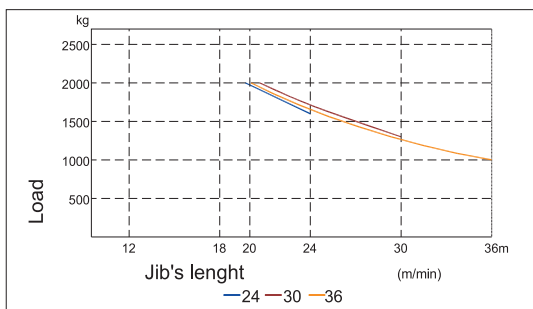
TERRI

TSX 36-1000

PARTS

		A (mm)	B (mm)	C (mm)	Peso (kg)
Jib section		7470	800	1650	1560
L31					
Jib section		6075	760	1220	385
L32					
Jib section		6055	760	1210	350
L33					
Jib section		6040	760	1200	275
L34					
Jib section		6030	760	1190	250
L35					
Jib section		5900	760	1400	240
L36					
Tower section 12m		11985	1180	1180	1950
A2					
Tower section 6m		6075	1180	1180	1030
A2					
Tower section 3m		3120	1180	1180	560
A2					
Telescopic section		3090	1385	1385	890
A1					
Counter-jib		7380	1200	1530	2450
Cross shaped base		2,8	4135	430	720
A2		3,8	5525	430	750
Cross shaped base		2,8	2025	250	720
A2		3,8	2720	250	400
Ballast		1160	320	2405	1500
Foundation tower		1170	1160	1160	250
A2					

LOAD DIAGRAM



SPEED DIAGRAM

