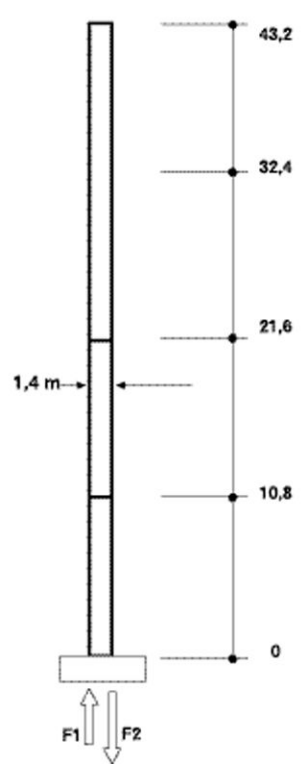
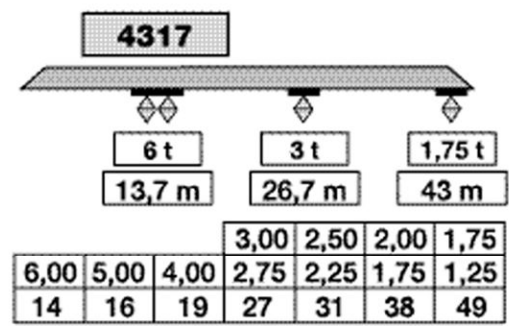
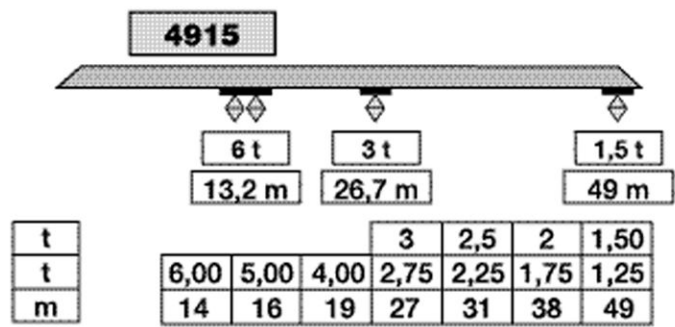
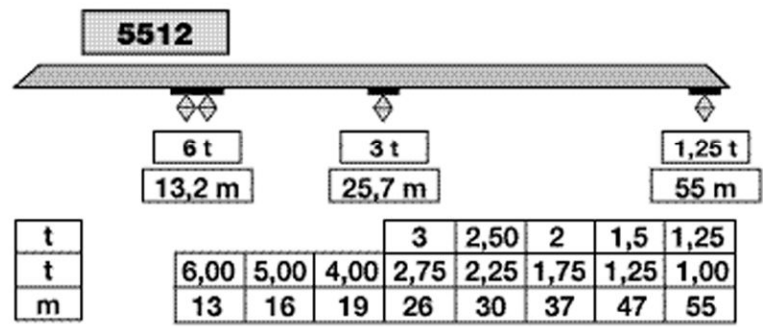
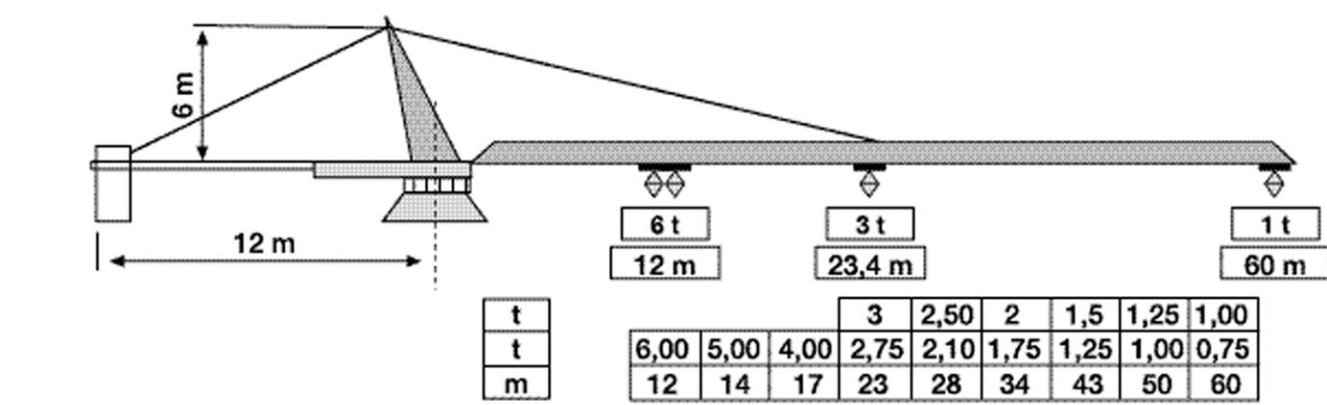
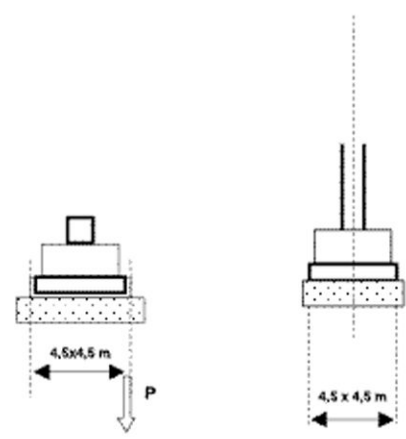


TERRI LINEA GC REINER SYSTEM MOD: TGC 60-1000 1,4

GRU A TORRE PER L'EDILIZIA

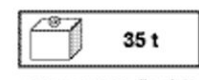


t
t
m



H (m) TORRE - TOWER

330 V 50HZ	ARGANO WINCH	POTENZA MAX MAIN SUPPLY	POTENZA MAX MAIN SUPPLY
	25 HP	18 KVA	36 KVA



senza zavorra di volata

	F1	F2	P
t	98	122	60

<p>HOSTING HP 25</p>	TIRO II		TIRO IV		<p>RCO</p>	0,8 rpm	6,5 Kgm
	m/min	t	m/min	t			
	70	1,5	35	3			
	35	3	17,5	6	<p>M 48</p>	25/50 m/min	2/1,5 HP
	8	3	4	6			

I DATI NON SONO IMPEGNATIVI E POSSONO ESSERE MODIFICATI IN QUALSIASI MOMENTO
THE DATA CAN BE CHANGED IN EVERY MOMENT WITHOUT NOTICE